

# THIESS

rehabilitation



CAPABILITY  
STATEMENT

**Rehabilitation**  
*is our business*



# About Thiess Rehabilitation

Thiess Rehabilitation offers world-leading mine rehabilitation services by mining professionals, who are also environmental experts.

Committed to our clients' drive to efficiently deliver rehabilitation results with lasting environmental value, we **design, develop** and **deliver** tailored, strategic rehabilitation solutions with extensive flexibility in process and equipment.

Our goal is to create **meaningful, genuine and sustainable** partnerships with Traditional Owners, Indigenous businesses and communities in the regions that we operate.

We offer end-to-end services, supporting large-scale rehabilitation, including multi-site campaigns. We also provide a smaller, individual services, understanding how they best fit within the wider rehabilitation lifecycle.

Whatever your context or goals, we ensure immediate and sustained value, with positive environmental, social and governance outcomes, so you can share the story of successfully restoring land.

*“ Mining is about value, and that value isn't fully realised until land is returned to a sustainable state. ”*



# Our services

Thiess Rehabilitation offers comprehensive rehabilitation services for the mining sector for sites of all sizes, commodities, requirements and lifecycle stages.

You gain a team with technical and operational expertise, backed by whole-of-mine-life knowledge, and a full suite of rehabilitation services.

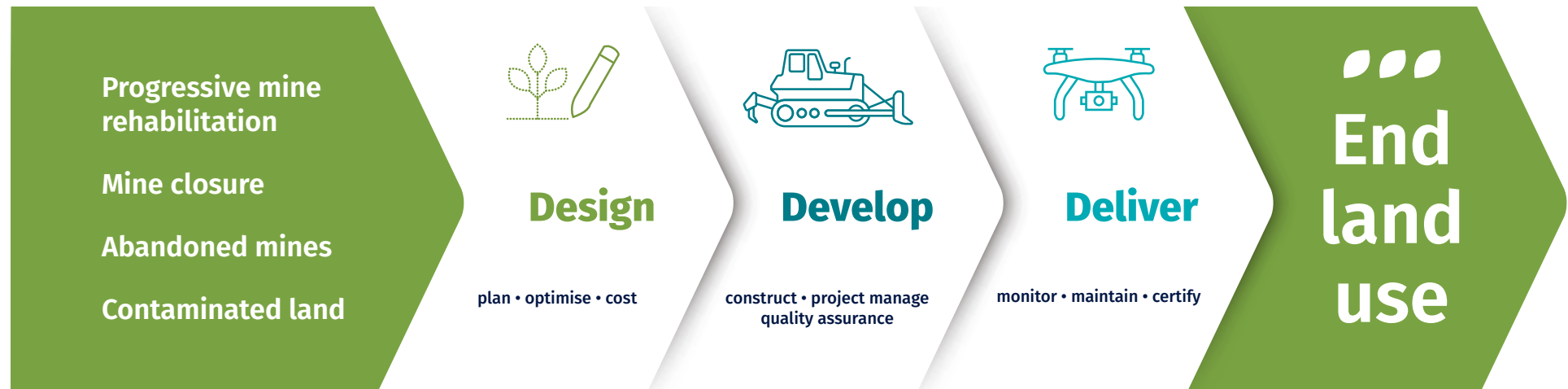
This includes:

- progressive mine rehabilitation
- mine closure, including infrastructure removal
- abandoned mines
- contaminated land requirements.

With access to a large asset base and strong balance sheet, and the ability to explore alternative commercial solutions, we further help clients access tailored solutions.

Clients can draw on our full suite of rehabilitation requirements in design, development and delivery. A key feature is our ability to optimise inputs and outcomes, from rehabilitation designs and operational schedules, to identifying efficiency gains and equipment utilisation options.

We also offer current insight into regulatory requirements and opportunities for mine rehabilitation, which we can tailor to your needs. This includes reviewing rehabilitation and closure management plans and associated costs and schedules, optimising mine closure bonds and costings and investigating alternative end land uses.



# Design



Thiess Rehabilitation optimises final landform designs to ensure the most efficient development and delivery of rehabilitation for our clients.

Our clients maximise value and certainty of delivery through engaging with us early, however, we can add measurable benefits at any stage of a project's journey.

✓ **Rehabilitation planning**

✓ **Final landform design development**

✓ **Design interrogation and optimisation to reduce material volumes**

✓ **Rehabilitation costing**

“  
Design outcomes that meet end land use objectives, regulatory obligations and address long-term closure requirements.”

## Technology-led

We use in-house software to design, optimise and deliver effective and efficient rehabilitation plans.

- **Our optimised design** leads to time and cost efficiencies in equipment selection and utilisation, which results in successful and effective rehabilitation development for our clients.
- **We work collaboratively** with our clients to explore alternative land use designs, including natural or conventional landforms, renewable energy systems and agriculture production.
- **We are at the cutting edge** of design innovation, technology development and implementation, and are constantly applying this to our rehabilitation projects.

# Develop



Our environmental specialists and operational teams use optimised designs as the foundation for progressive rehabilitation development and delivery.

Our rehabilitation execution services are listed below.

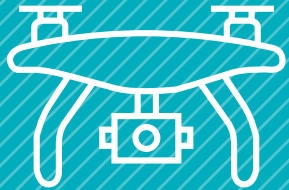
- ✓ **Large scale material excavation and haulage, including blasting services, to facilitate optimised land profiles**
- ✓ **Bulk profiling and shaping of mine spoil**
- ✓ **Construction of water management, erosion and sediment control structures**
- ✓ **Final surface preparation and topsoiling**
- ✓ **Tailored revegetation programs**

## Technology-led

Our team embraces technology and employs a range of innovations to drive greater value through rehabilitation.

- We employ **semi-autonomous technology (SATS)** in our dozers for bulk reshaping, offering improved safety performance, lower operational costs and increased productivity.
- **HPGPS** for machine guidance to ensure conformance to design.
- **Real time monitoring and conformance analysis** to monitor progress, report changes, and identify non-conformances.
- Regular **survey updates into our 3D GIS platform** so all personnel can view current progress.
- **Drones** to complete seeding and fertilising phases of work.

# Deliver



For all projects or programs of work, our quality assurance process significantly reduces residual risk and ongoing liability for our clients.

Our delivery is underpinned by smart, rigorous processes that support environmental, social and governance excellence.

### Technology-led

Our specialists accurately monitor rehabilitation success, reviewing vegetation health and diversity, and identifying erosion, using drones to capture footage of rehabilitated areas.

This technology cost-effectively provides a complete overview of large areas of land, delivering a more accurate picture of rehabilitation performance.

Clients ultimately gain a strong body of evidence of their rehabilitation outcomes, supporting progressive certification of rehabilitated land and reducing ongoing rehabilitation liabilities.

- ✓ **Highly accurate and detailed data**
- ✓ **Capture and process data more efficiently and safely**
- ✓ **Greater flexibility and pace than traditional surveying methods**
- ✓ **Transparent, measurable sustainability progress and quality**

“  
*Extensive experience in high-precision drone surveying, with time and cost savings, safety improvements and other operational advantages.*”

# Our ESG commitment

We're focussed on a sustainable future, it's our core business.

We're committed to delivering sustainable mine rehabilitation solutions and contributing to a low-carbon future.

We're passionate about delivering ESG value on all our rehabilitation projects... and partnering with our clients to leave a positive legacy.

## Reconciliation commitment

Thiess Rehabilitation adopts Thiess' Reconciliation Action Plan, focused on building relationships, fostering respect and creating lasting opportunities for Indigenous Australians.

We also prioritise working with local suppliers, including local Indigenous businesses, to ensure a supply chain that benefits the local community, and partnerships that are able to extend value for all.

“

*Thiess Rehabilitation is proudly innovative, efficient and responsible.*

”

# Our experience

The Thiess Rehabilitation technical support team includes mining engineers, civil specialists, surveyors, geotechnical and environmental professionals as well as experienced operators and supervisors.

As industry leaders in mine rehabilitation management, Thiess Rehabilitation has the capability to successfully and cost-effectively deliver projects that support our clients in meeting their end land use, environmental and community objectives.

Since 2007, Thiess has completed more than 10,000 hectares of mine rehabilitation globally. Currently, Thiess Rehabilitation is delivering rehabilitation services in both Queensland and New South Wales. These services range from design, blasting services, bulk earthworks and shaping through to the development of tailored drainage and revegetation strategies, including ongoing monitoring and maintenance of rehabilitation areas.





# Ensham Mine

AUSTRALIA

---

**HECTARES REHABILITATED:** 380 ha (2022-2024)

---

**SERVICES:** Full design, develop and deliver scope

---

**In partnership with Sungela Australia's Ensham Resources, Thiess Rehabilitation delivered mine rehabilitation solutions at Ensham Coal Mine (Yongala Area), south-west Queensland, that created areas for cattle grazing across more than 350 hectares of land.**

The rehabilitation earthworks aligned with the project's Progressive Rehabilitation and Closure Plan (PRCP) and included final landform development, topsoil spreading and amelioration, and seeding and mulching activities.

This project showcased Thiess Rehabilitation's excellence in design optimisation and rehabilitation services, including using drone technology for survey and seeding.

Thiess Rehabilitation commenced final landform development in September 2022 and delivered over 350 ha of final landform surface and over 180 ha of surface seeded by August 2024.



# Muswellbrook Coal Mine

AUSTRALIA

**HECTARES REHABILITATED:** 180 ha (2023-2025)

**SERVICES:** Detailed design, develop and deliver scope

Over a two-year contract with Idemitsu Australia's Muswellbrook Coal Company (MCC), Thiess Rehabilitation is delivering rehabilitation services at the Muswellbrook Coal Mine, in the upper Hunter region of New South Wales.

Thiess Rehabilitation is conducting detailed design and construction of the post-mining landform, creating a combination of native ecosystem and pasture land uses that generate approximately 180 hectares of rehabilitated land across MCC's open cut mine.

Given our legacy at Muswellbrook Coal Mine via our founding company, Thiess Brothers, Thiess Rehabilitation is excited to be given the responsibility to deliver value to this site and to the community through the site's post-mining transition.



**180 ha**  
REHABILITATED  
(2023-2023)

# Lake Vermont

AUSTRALIA

---

**HECTARES REHABILITATED:** >480ha (2011-2023)

---

**SERVICES:** Full design, develop and deliver scope

---

**Lake Vermont's progressive rehabilitation campaign is returning disturbed land to cattle grazing or native ecosystem land uses.**

It showcases the latest technology to drive efficient, effective rehabilitation, from semi-autonomous dozer pushing to multispectral UAV mapping and classifying of the health of rehabilitated areas.

With Thies delivering a whole-of-mine service contract, Thies Rehabilitation leveraged synergies across mine planning, operations and rehabilitation to achieve best-practice productivity and consistency.

We performed topsoil stripping and stockpiling, profiling, topsoil placement, construction of water management structures, seeding and fertiliser application, and ongoing monitoring of rehabilitation success.



**480ha**  
REHABILITATED  
(2011-2023)



# Mount Pleasant Operation

AUSTRALIA

**HECTARES REHABILITATED:** >180 ha (2018-2023)

**SERVICES:** Full design, develop and deliver scope

**Thiess Rehabilitation delivered rehabilitation outcomes that mirror Indigenous local habitat, set within some of the most stringent environmental requirements in New South Wales.**

The resulting open, grassy woodland, with native grasses, trees and shrubs, incorporates rock piles and tree hollows to provide connected habitats that create wildlife corridors with the surrounding landscape, encouraging the return of local fauna. It has been recognised as industry best practice, including impressive construction quality assurance processes that have been shared with the wider industry.

The geo-fluvial, natural landform, including contours, peaks and valleys, looks less engineered and more visually appealing, with better long-term landform stability.



# Global Projects

## INDONESIA

**HECTARES REHABILITATED:** 4,318 ha (2008-2023)

**SERVICES:** Full design, develop and deliver scope

**Working in collaboration with our specialists in Australia, our team in Indonesia delivered mine rehabilitation solutions in Indonesia at the Sangatta, Melak and MSJ Coal Mines.**

Since 2008, we have successfully rehabilitated 4062 hect+ares of land, transforming these areas into sustainable and stable post-mining landscapes.

## NORTH AMERICA

In our strategic move to expand our global footprint, Thiess has established a base in Salt Lake City, Utah. This new location marks our entry into the North American market, allowing us to deliver mine reclamation and environmental services

Our services include comprehensive land reshaping, soil spreading, and soil ripping under challenging geotechnical conditions and during periods of high rainfall. Our expertise in handling complex rehabilitation challenges ensures long-term stability and sustainability.

that unlock value for our clients. Our focus in North America will be on leveraging our extensive experience and innovative solutions to meet the diverse needs of the mining industry in this region.



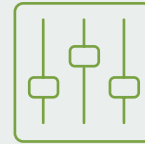
# Why Thiess Rehabilitation?

Our proven methodology and expertise, backed by innovation and leading technology, offers:



## Better time and cost efficiency

- **We're efficient.** Our business is built on providing an efficient, cost-effective service to our clients, using our best-in-class equipment and technology.
- **We have proven design smarts** that ensure optimal rehabilitation outcomes in the most cost-effective way.
- These efficiencies **reduce risk** while delivering lower costs.



## Reduced risk

- **End-to-end** mining skill, safety performance and in-depth regulatory insight to share risk, maximise surety and manage compliance with confidence.



## Visible social value

- **Practical environmental and social benefits** by returning land to a sustainable state via a process that engages local and Indigenous communities, and guarantees lasting outcomes.

# Our team

Our technical and operational experts will help you gain the most value from your investment in rehabilitation – this is our core business and our passion.



**Jonathan Miln,  
Group Manager**

As Group Manager, **Jonathan** leads Thiess Rehabilitation to ensure we safely deliver customised, innovative mine rehabilitation solutions that maximise value for our clients and the communities in which we work.

This includes project operations support, client liaison and relationship management, business development, resourcing and employee engagement.

An experienced mining engineer and dynamic leader, Jonathan combines hands-on, technical excellence with diverse project and leadership experience.

Jonathan's experience includes a depth of technical, operational, and commercial leadership roles over fifteen years with Thiess, and Rio Tinto. With a delivery-focused approach,

backed by his robust understanding of contract development, negotiation, and developing customised solutions to meet client needs, Jonathan's experience spans the lifecycle of projects, from planning and development to delivery and post-project evaluation.

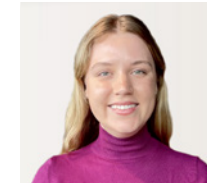
Collaborative, energetic and strategic, Jonathan is driven by the opportunity to leave a positive legacy, and genuinely engages with all stakeholders to ensure best-for-project, best-for-client, and, best-for-community outcomes.



**Rhianna Goodwin,  
Principal – Rehabilitation**

**Rhianna** Goodwin has more than 14 years' experience in environmental and rehabilitation management in the resources sector. In her role with Thiess Rehabilitation, she provides Thiess' technical functions with expert advice on rehabilitation management, including design and construction optimisation and best practice methodologies. Rhianna ensures continuous improvement and sustainability initiatives, such as Indigenous engagement and female participation programs, are integrated into project planning.

Rhianna holds a Bachelor of Applied Science – Environmental Science and Bachelor of Arts – International Studies from QUT.



**Isabel Hardy, Senior Mine  
Rehabilitation Advisor**

**Isabel** Hardy brings strategic and technical skills, and a strong background in policy to Thiess Rehabilitation.

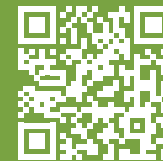
Having worked with Thiess' Corporate Technical Services team, Isabel combines her experience in open-cut and underground mines, including supporting rehabilitation and mine closure planning and execution on site, with corporate governance skills.

Isabel diverse role includes researching project rehabilitation commitments, challenges and emerging trends to ensure Thiess Rehabilitation remains responsive to industry demands, and providing project and operations support and tender submissions.

Isabel holds a Bachelor Science Ecology – Economics, Natural Resources Management and Policy.



# **THIESS** rehabilitation



**Thies Rehabilitation**

T: +61 7 3002 9000

E: [info@thiesrehabilitation.com](mailto:info@thiesrehabilitation.com)

W: [thiesrehabilitation.com](http://thiesrehabilitation.com)